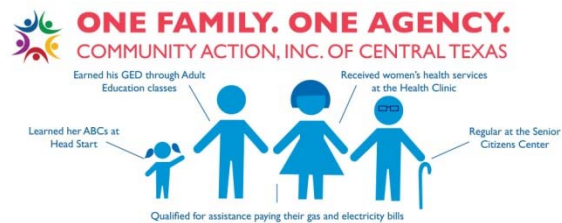


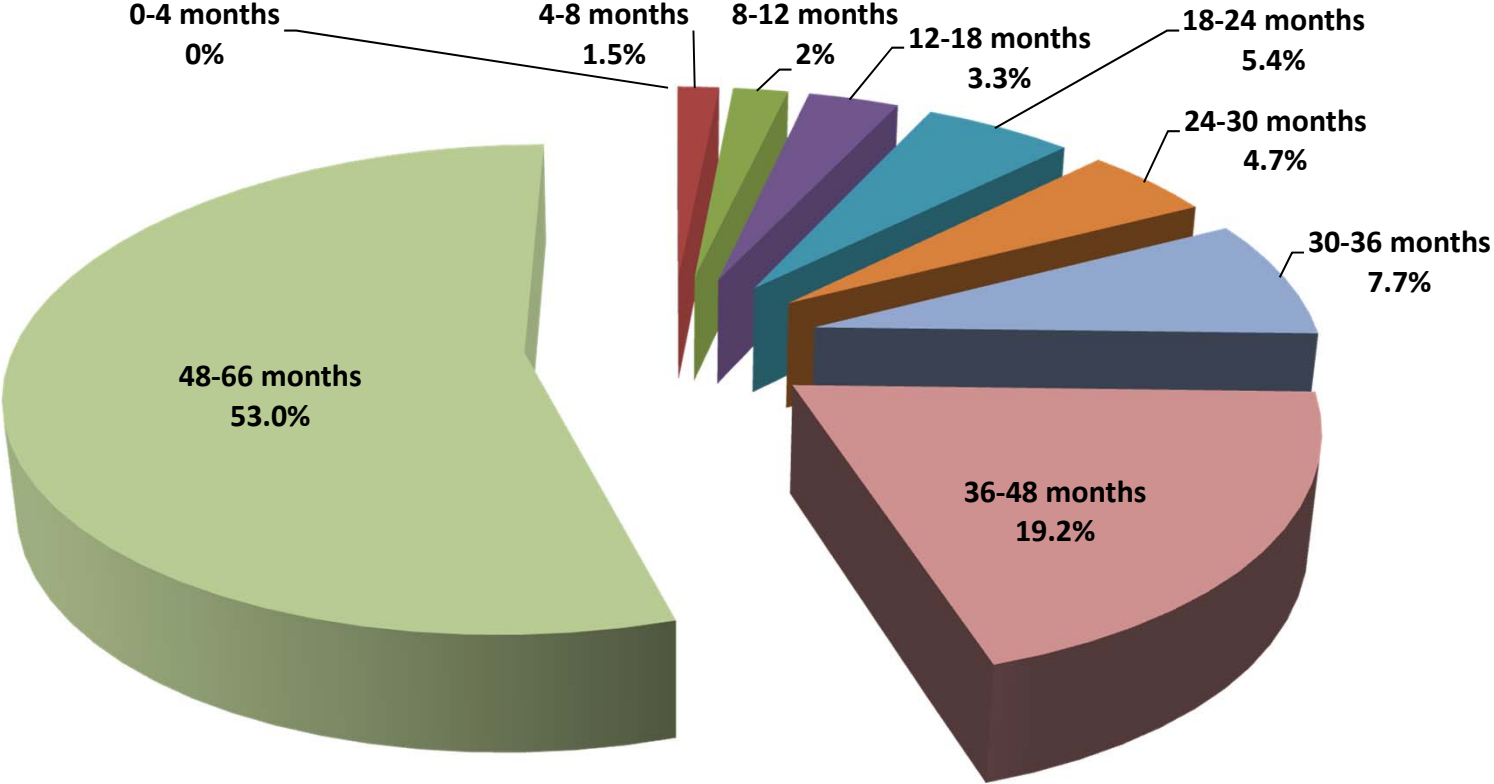
Community Action Inc., of Central Texas Head Start Program (zero-to-five) School Readiness Data Analyses



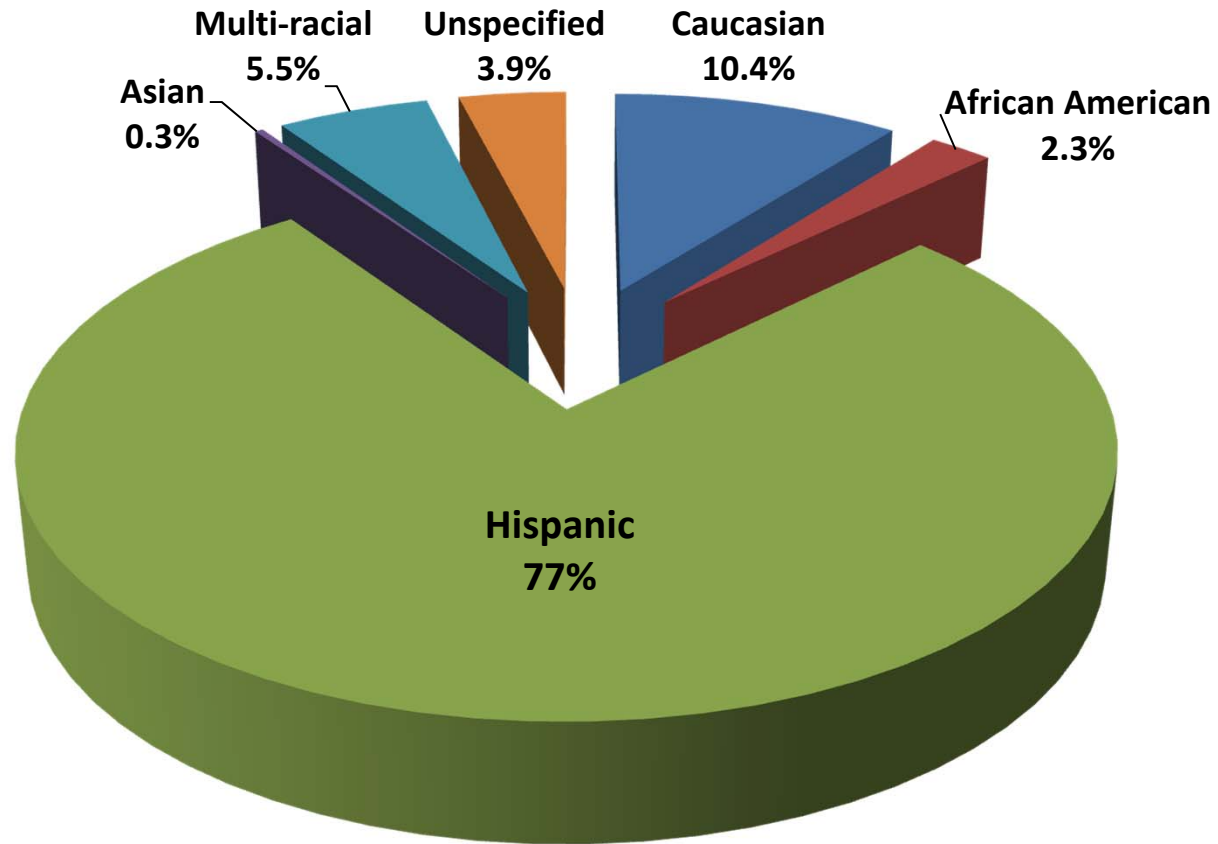
August 2014-May 2015



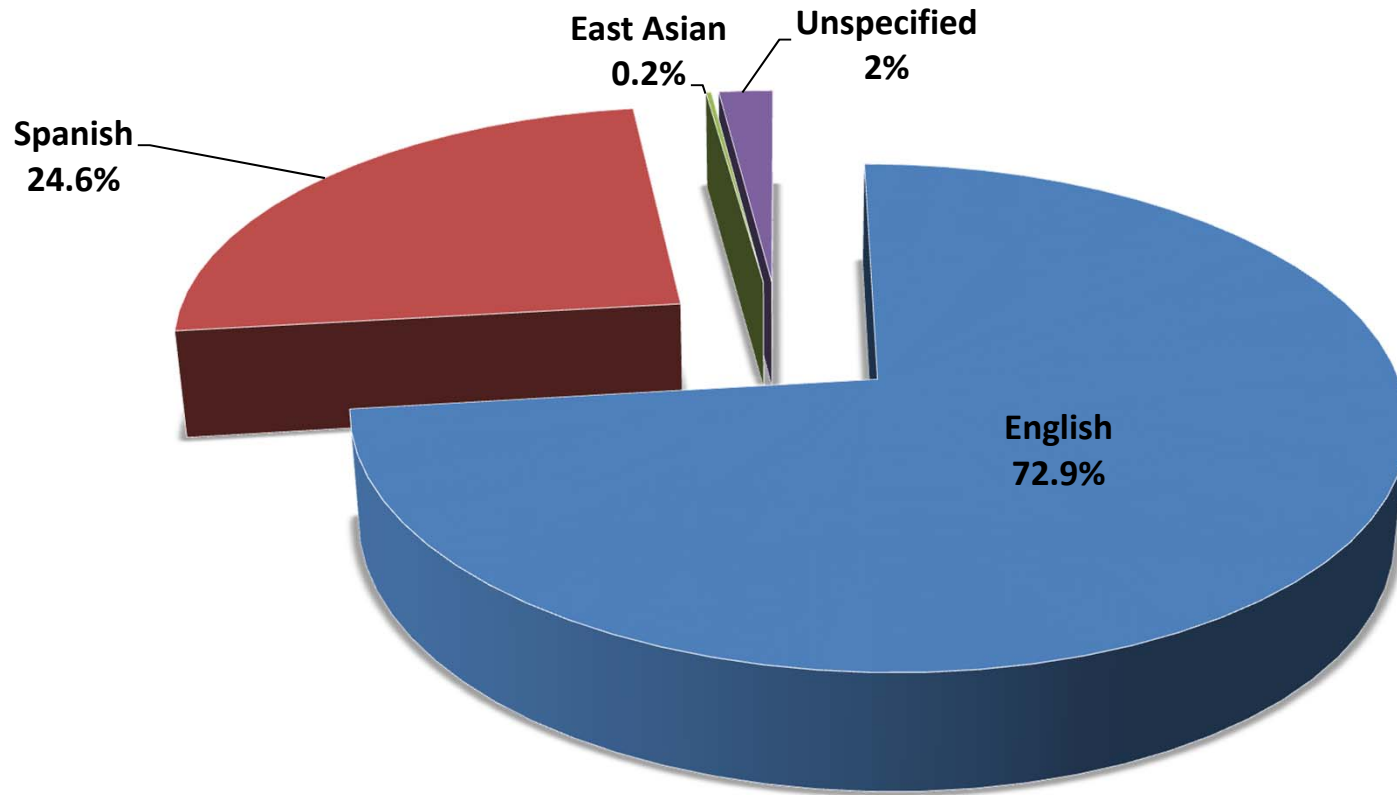
Ages of Children Served as of May 2, 2015



Ethnicity of Children Served as of May 2, 2015



Languages of Children Served as of May 2, 2015



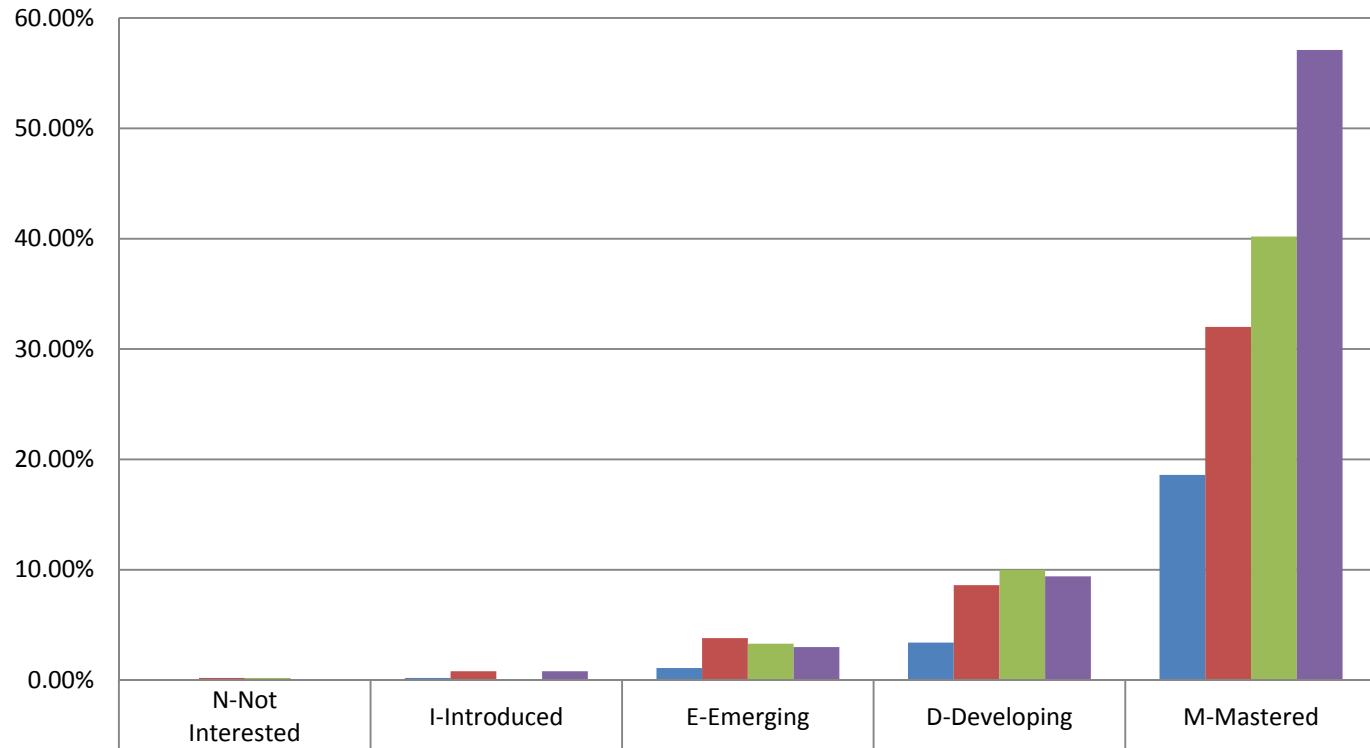
Disability services May 2015

	EHS	HS	Private	TOTAL
Disability Goal	17	36	0	53
Currently Enrolled w/ Disability	6	49	9	55(64)
Terminated w/ Disability	10	7	3	17(20)
YTD w/ Disability Served	16	56	12	72(84)

(#) is the total number of children served including private services.

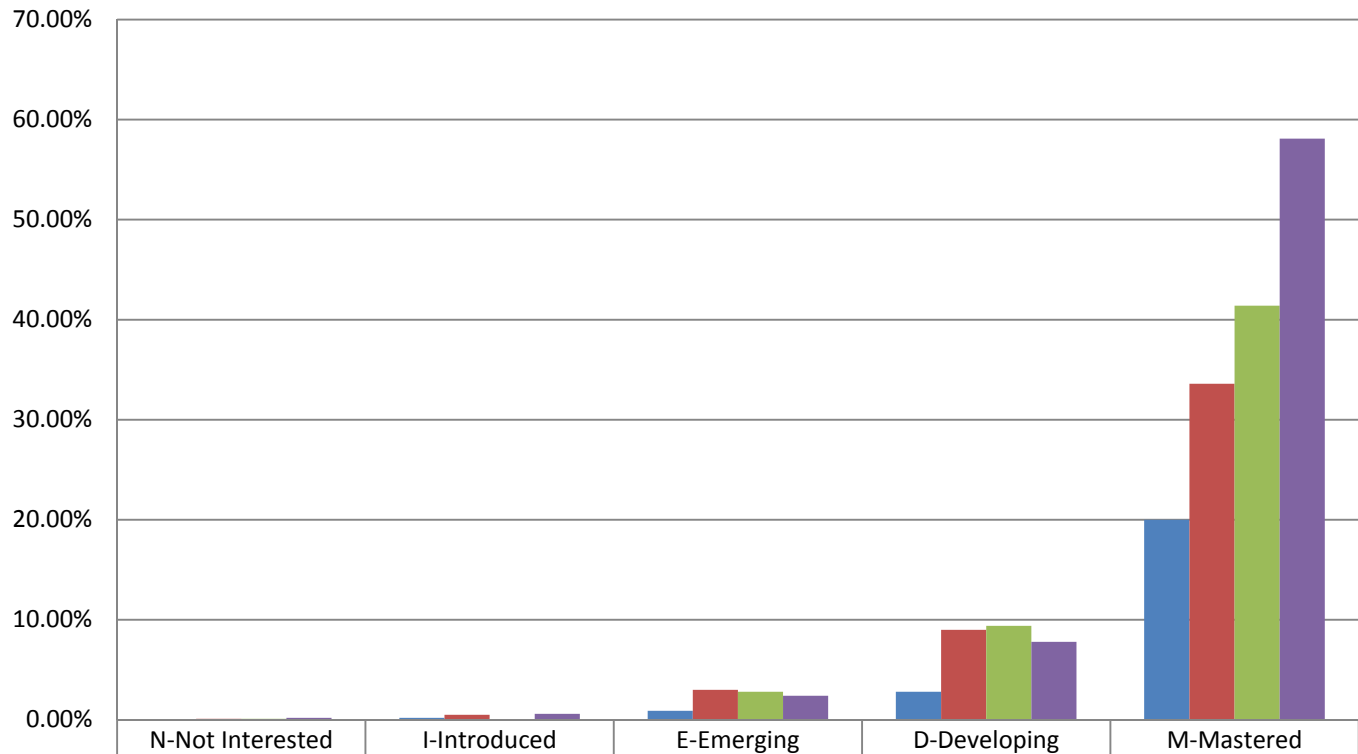
We have had several children transition from EHS(IFSP) to HS(IEP) services.

Cognition



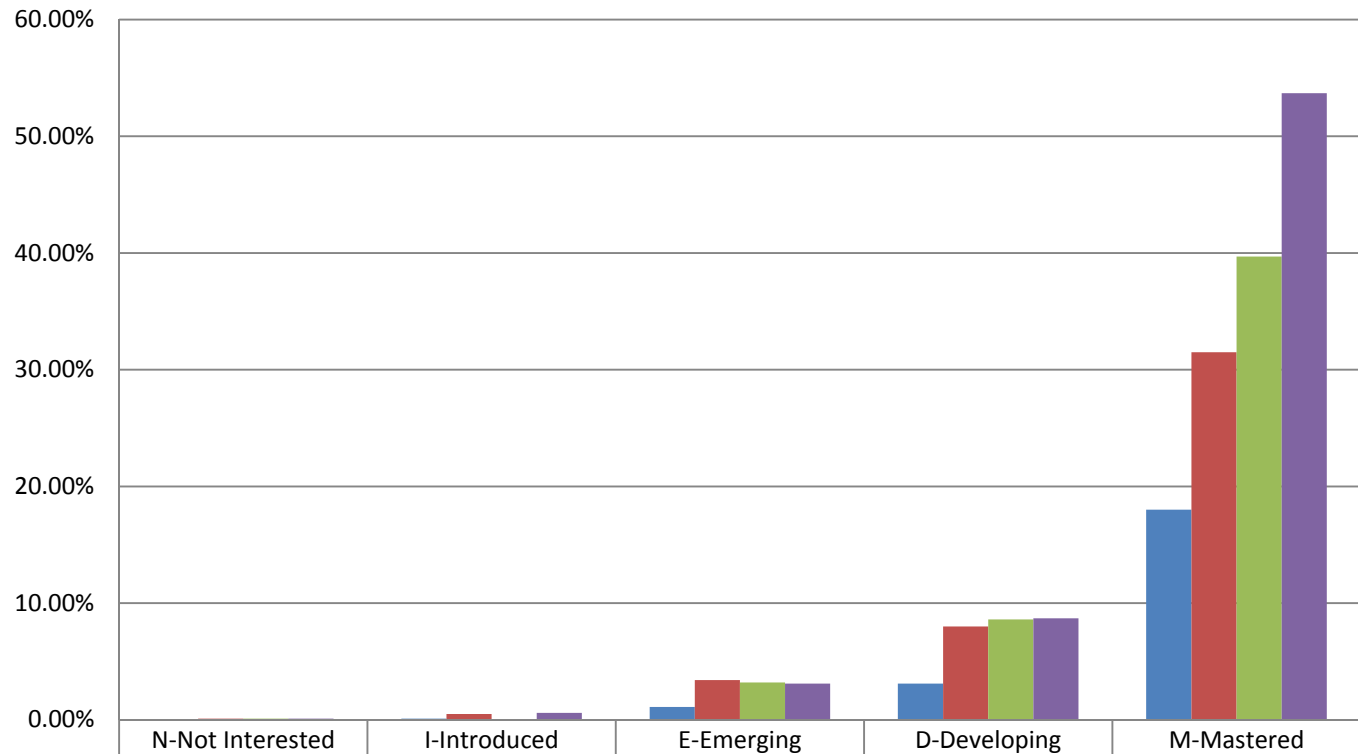
Start 8/26/14	0.10%	0.20%	1.10%	3.40%	18.60%
First Quarter 8/26/14-11/26/14	0.20%	0.80%	3.80%	8.60%	32.00%
Second Quarter 11/26/14-1/26/15	0.20%	0.00%	3.30%	10.00%	40.20%
Third Quarter 1/26/15-4/26/15	0.10%	0.80%	3.00%	9.40%	57.10%

Communication



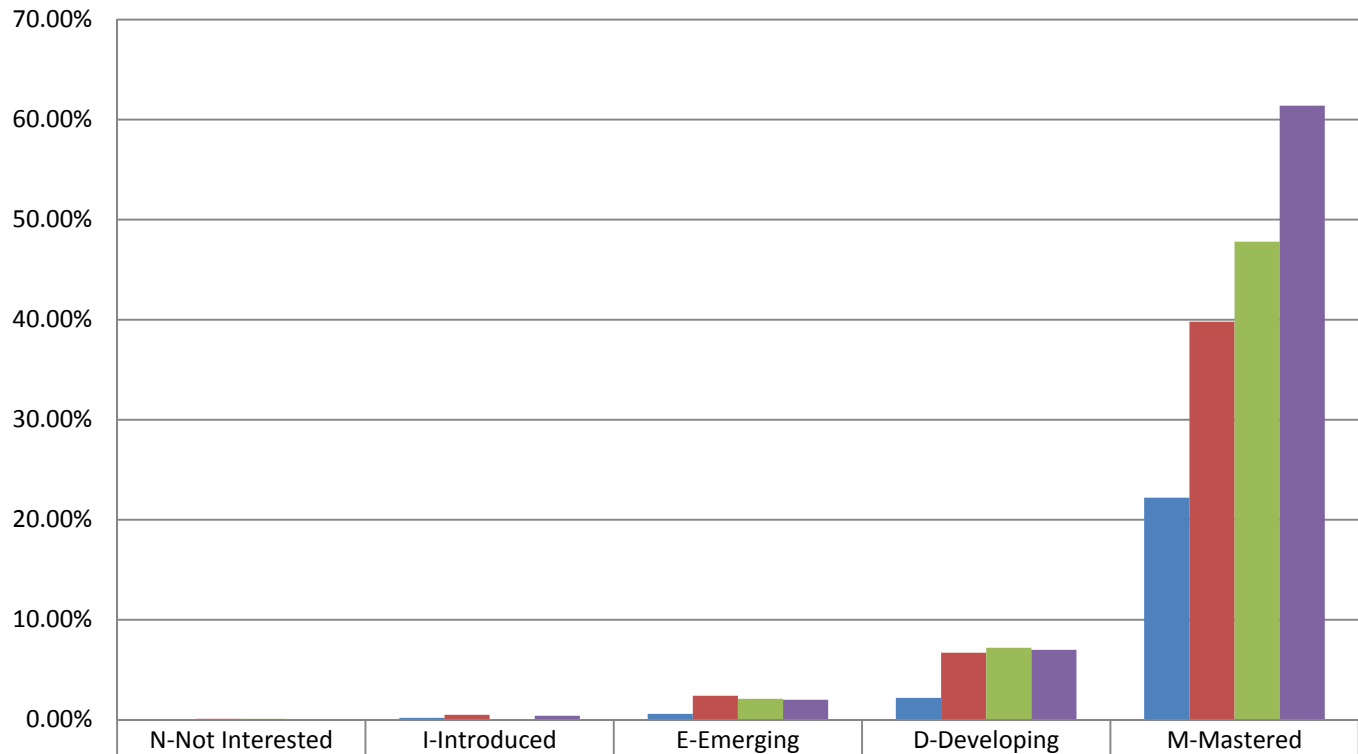
■ Start 8/26/14	0.00%	0.20%	0.90%	2.80%	20.00%
■ First Quarter 8/26/14-11/26/14	0.10%	0.50%	3.00%	9.00%	33.60%
■ Second Quarter 11/26/14-1/26/15	0.10%	0.00%	2.80%	9.40%	41.40%
■ Third Quarter 1/26/15-4/26/15	0.20%	0.60%	2.40%	7.80%	58.10%

Fine Motor



■ Start 8/26/14	0.00%	0.10%	1.10%	3.10%	18.00%
■ First Quarter 8/26/14-11/26/14	0.10%	0.50%	3.40%	8.00%	31.50%
■ Second Quarter 11/26/14-1/26/15	0.10%	0.00%	3.20%	8.60%	39.70%
■ Third Quarter 1/26/15-4/26/15	0.10%	0.60%	3.10%	8.70%	53.70%

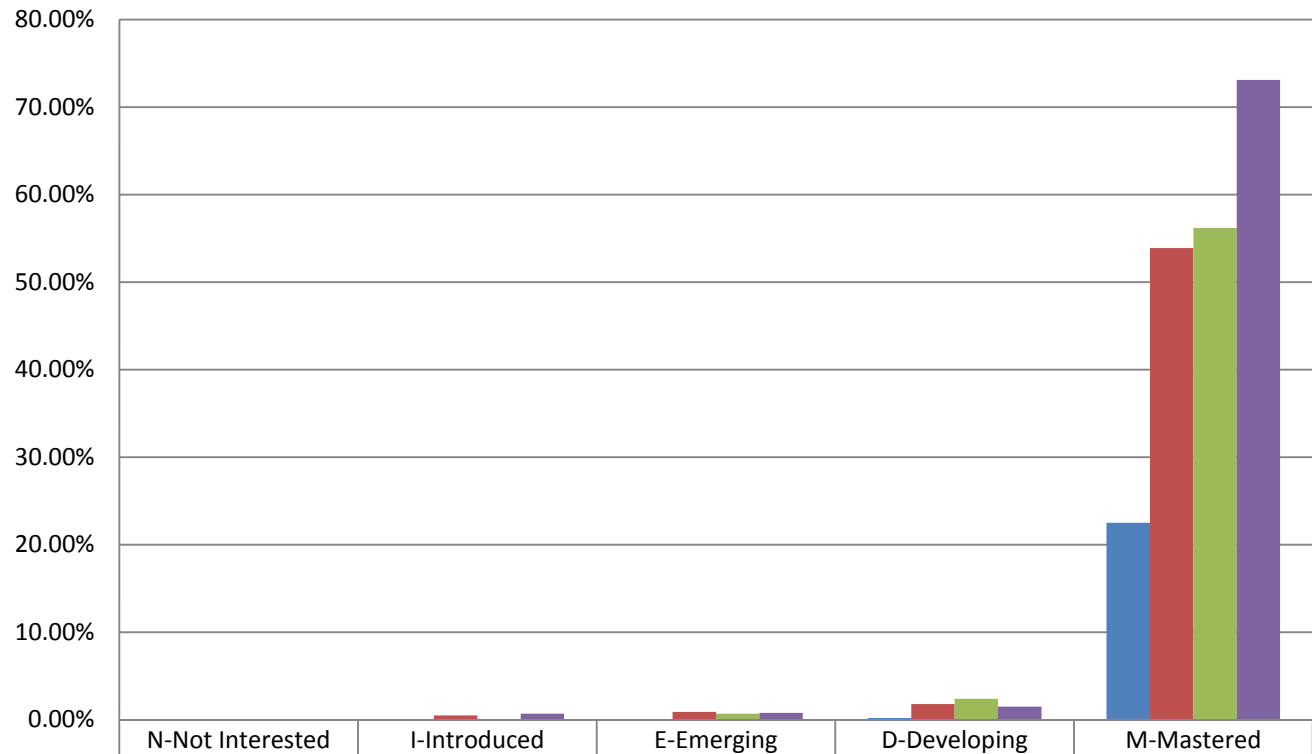
Gross Motor



■ Start 8/26/14	0.00%	0.20%	0.60%	2.20%	22.20%
■ First Quarter 8/26/14-11/26/14	0.10%	0.50%	2.40%	6.70%	39.80%
■ Second Quarter 11/26/14-1/26/15	0.10%	0.00%	2.10%	7.20%	47.80%
■ Third Quarter 1/26/15-4/26/15	0.00%	0.40%	2.00%	7.00%	61.40%

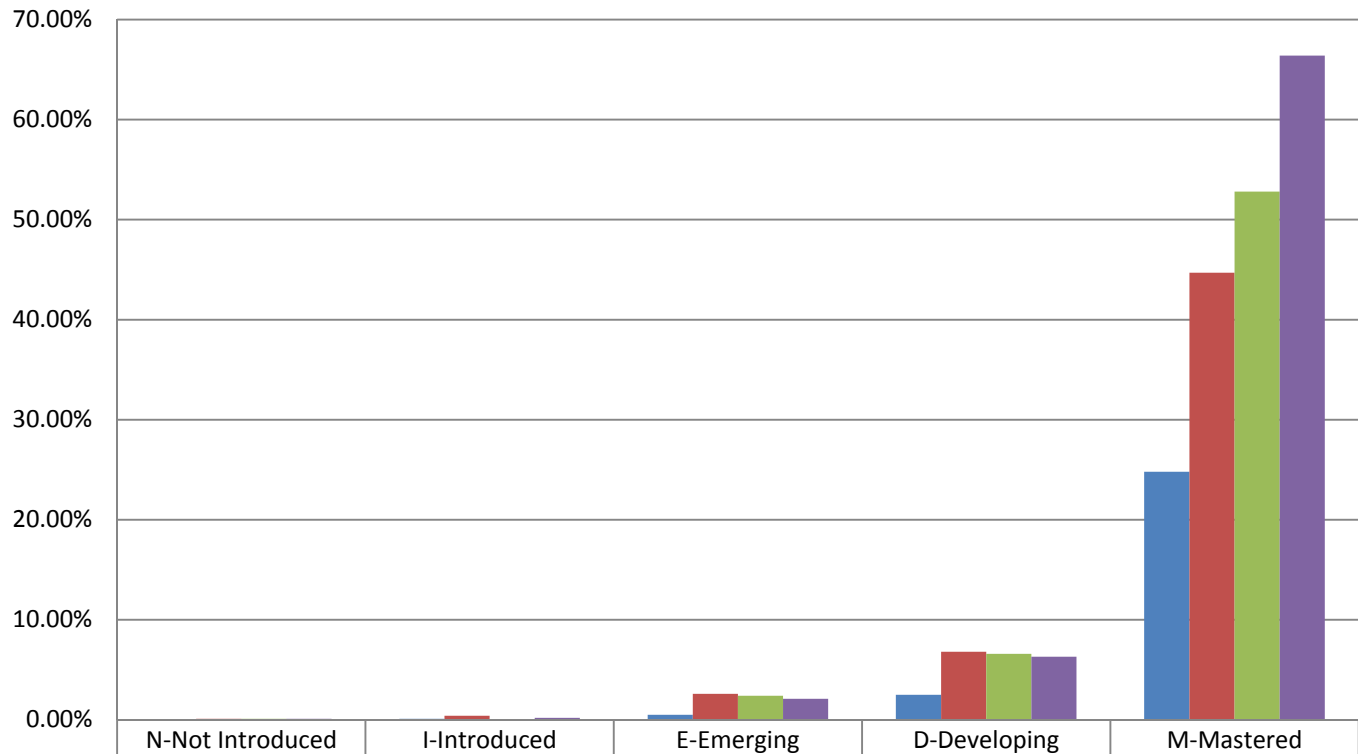
Sensorimotor

Only for children 0-8months



■ Start 8/26/14	0.00%	0.00%	0.10%	0.20%	22.50%
■ First Quarter Report 8/26/14-11/26/14	0.00%	0.50%	0.90%	1.80%	53.90%
■ Second Quarter 11/16/14-1/26/15	0.00%	0.00%	0.70%	2.40%	56.20%
■ Third Quarter 1/26/15-4/26/15	0.00%	0.70%	0.80%	1.50%	73.10%

Social Emotional



■ Start 8/26/14	0.00%	0.10%	0.50%	2.50%	24.80%
■ First Quarter 8/26/14-11/26/14	0.10%	0.40%	2.60%	6.80%	44.70%
■ Second Quarter 11/26/14-1/26/15	0.10%	0.00%	2.40%	6.60%	52.80%
■ Third Quarter 1/26/15-4/26/15	0.10%	0.20%	2.10%	6.30%	66.40%

Education Goals Based on 2014-2015 Data

- Continue to train staff on the importance of documenting goals being introduced to children and to document emerging and developing skills as well.
- Use 2014-2015 data to develop school readiness program goals for the Agency/ HS Program zero-to-five for the upcoming 2015-2016 school year.
- Share program, center, and classroom data with staff on a regular basis to reinforce the importance of documentation and show children's progress during the school year.
- Use CLASS classroom assessment data and ITERS EHS Classroom checklist data to plan professional development
- DLL Student native language proficiency assessment. Determining baseline for English language proficiency- research instruments